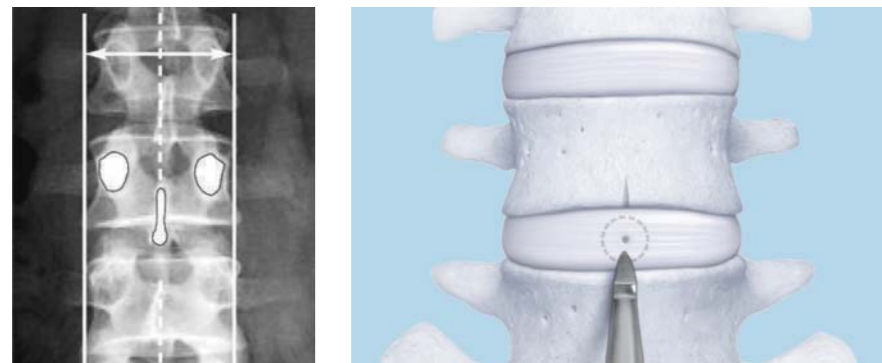
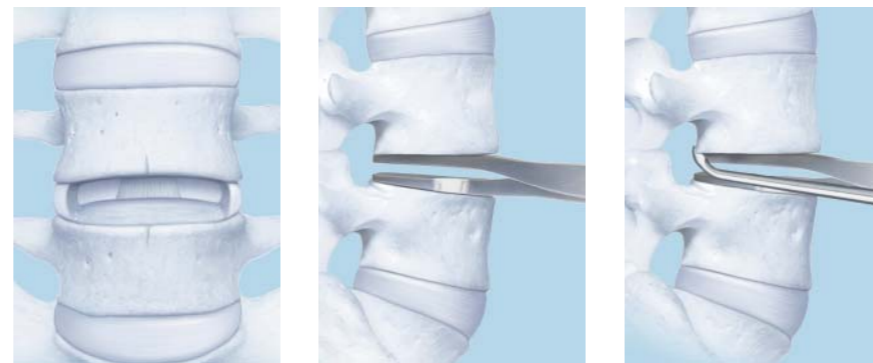


## 1. Mark midline



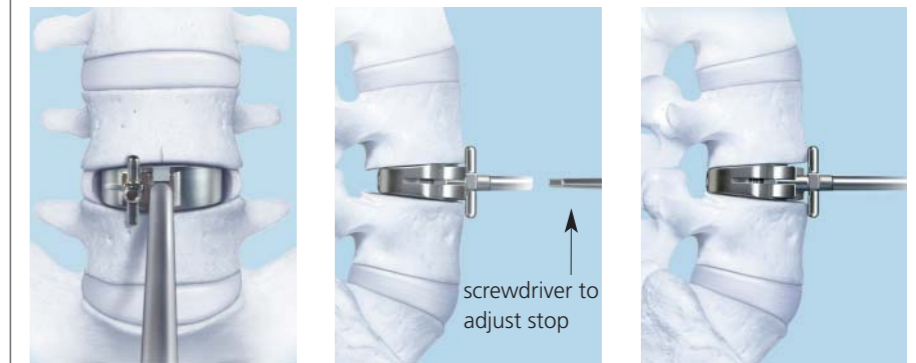
- Confirm midline via AP fluoroscopy.
- Mark midline on vertebral bodies.

## 2. Perform discectomy and remobilize



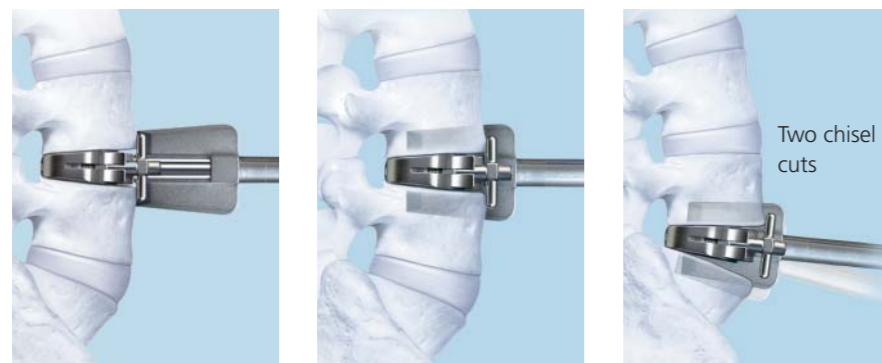
- Perform thorough discectomy: free posterolateral corners of disc material.
- Preserve the integrity of the bony endplates: insert spreader(s) to the posterior margin of the vertebral body.
- Remobilize the disc space; continue discectomy as needed.

## 3. Trial



- Before trial insertion, ensure that the adjustable stop is fully seated.
- Advance trial on midline to the posterior margin. Adjust stop as needed.
- Choose trial that best matches the anatomy (footprint, disc height, lordosis).

## 4. Chisel



- Ensure the adjustable stop is fully seated on vertebral bodies.
- Advance the chisel over the trial shaft until fully seated on the trial.
- If needed, chisel twice (parallel to each endplate) to ensure adequate chisel depth for implant insertion.

## 5. Insert endplates



- Align the keels with the chisel cuts.
- Using the mallet, insert the ProDisc-L to the posterior margin of the vertebral bodies.

## 6. Load poly inlay



- Load the poly inlay into the inserter grooves ("Dome-up, dome-up").

## 7. Distract



- Assemble the distractor into the inserter and advance with thumbscrew.
- Visually confirm that the posterior edge of the endplates have separated.

## 8. Seat and lock poly inlay



- Fully seat and lock the poly inlay with the inlay pusher.
- The **ONLY** way to confirm the poly inlay is locked is to visually and tactilely confirm "NO STEP, NO GAP".

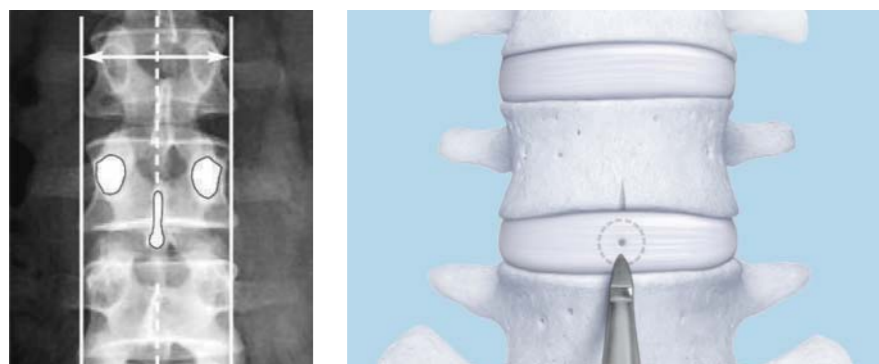
## 9. Confirm final placement



- Verify final implant position with AP and lateral imaging.

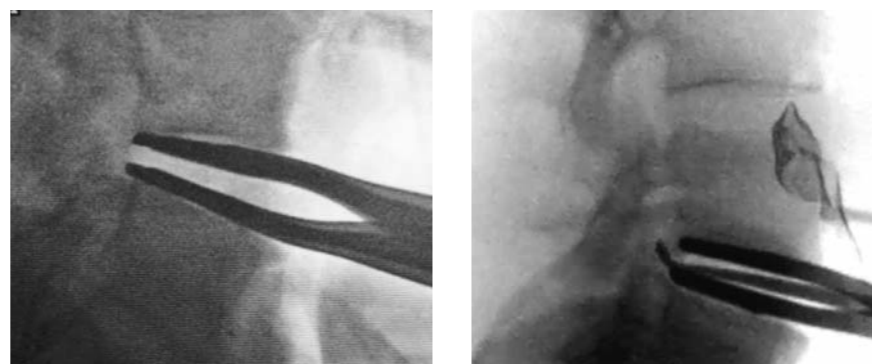
**Note: Please refer to technique guide for indications and complete instructions for use.**

## 1. Mark midline



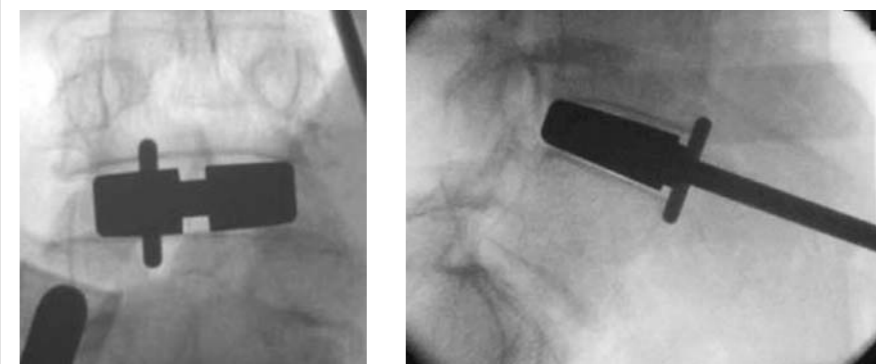
- Confirm midline via AP fluoroscopy.
- Mark midline on vertebral bodies.

## 2. Perform discectomy and remobilize



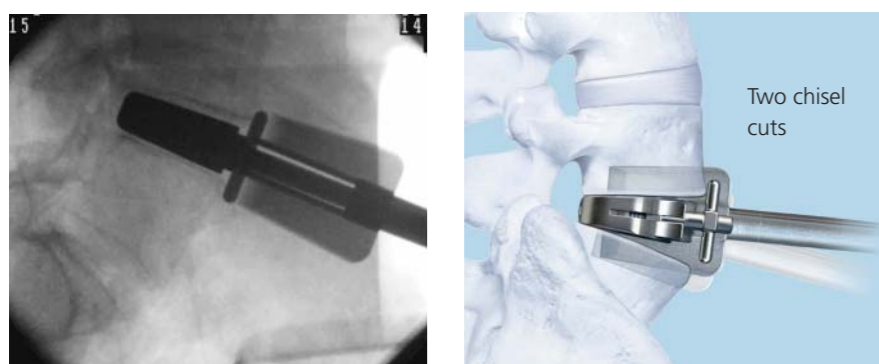
- Perform thorough discectomy: free posterolateral corners of disc material.
- Preserve the integrity of the bony endplates: insert spreader(s) to the posterior margin of the vertebral body.
- Remobilize the disc space; continue discectomy as needed.

## 3. Trial



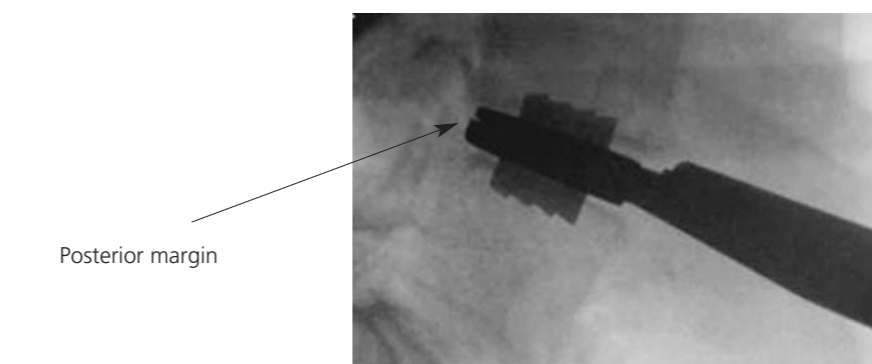
- Before trial insertion, ensure that the adjustable stop is fully seated.
- Advance trial on midline to the posterior margin. Adjust stop as needed.
- Choose trial that best matches the anatomy (footprint, disc height, lordosis).

## 4. Chisel



- Ensure the adjustable stop is fully seated on vertebral bodies.
- Advance the chisel over the trial shaft until fully seated on the trial.
- If needed, chisel twice (parallel to each endplate) to ensure adequate chisel depth for implant insertion.

## 5. Insert endplates



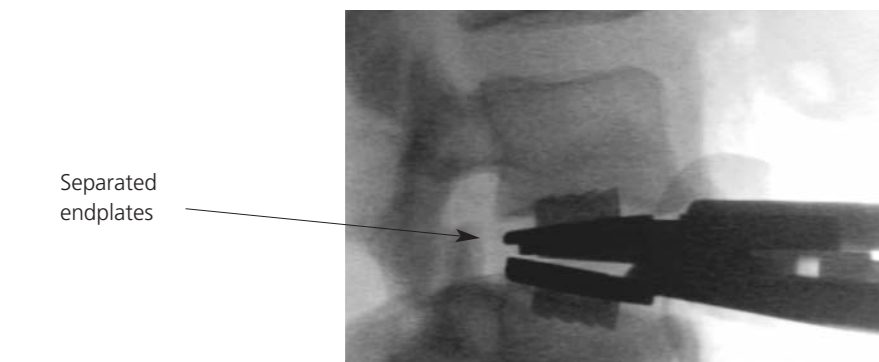
- Align the keels with the chisel cuts.
- Using the mallet, insert the ProDisc-L to the posterior margin of the vertebral bodies.

## 6. Load poly inlay



- Load the poly inlay into the inserter grooves ("Dome-up, dome-up").

## 7. Distract



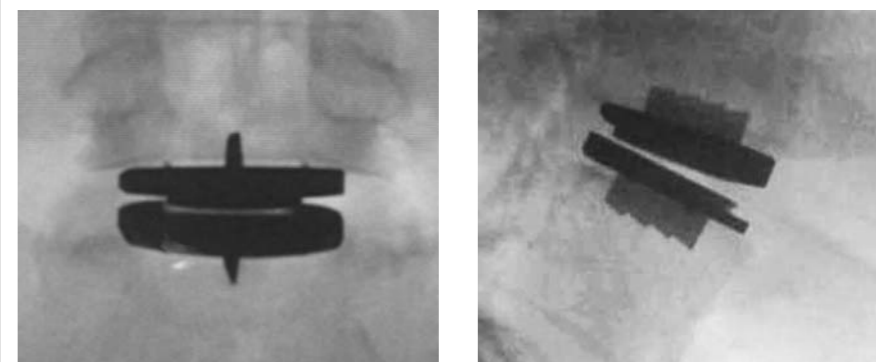
- Assemble the distractor into the inserter and advance with thumbscrew.
- Visually confirm that the posterior edge of the endplates have separated.

## 8. Seat and lock poly inlay



- Fully seat and lock the poly inlay with the inlay pusher.
- The **ONLY** way to confirm the poly inlay is locked is to visually and tactilely confirm "NO STEP, NO GAP".

## 9. Confirm final placement



- Verify final implant position with AP and lateral imaging.

**Note: Please refer to technique guide for indications and complete instructions for use.**