

### 1. Insert Retainer Pins

- Parallel to operative disc space; 1/3 zone
- Engage the posterior cortex

### 2. Distract – “Intradiscal”

- Distract the vertebral body distractor
- Retain with vertebral body retainer

### 3. Trial

- Largest footprint, shortest height
- To the posterior margin, centered on midline

### 4a. Prepare Keel Channels: Milling

- Under full power, insert bit straight into vertebral body
- Sweep bit towards trial and then back
- Repeat milling in the other vertebral body

### 4b. Prepare Keel Channels: Chiseling

- Primary (fenestrated) chisel first
- Advance until fully seated on trial
- Repeat with secondary (box) chisel

### 5. Verify Keel Channels

- Clean keel channels
- Verify depth and height of keel channels are equal

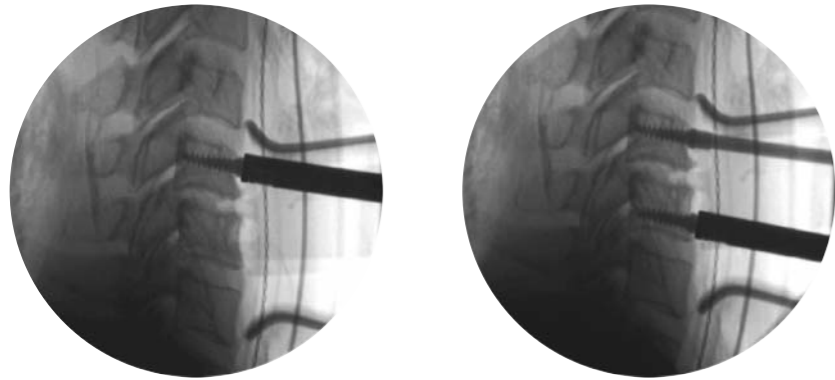
### 6. Implant

- Load implant from package
- Confirm UP on inserter matches UP on implant
- Confirm poly inlay is inferior

- Confirm UP on inserter is cranial, poly insert is inferior
- Align implant keels with keel channels
- Confirm trajectory; advance to end of keel cuts

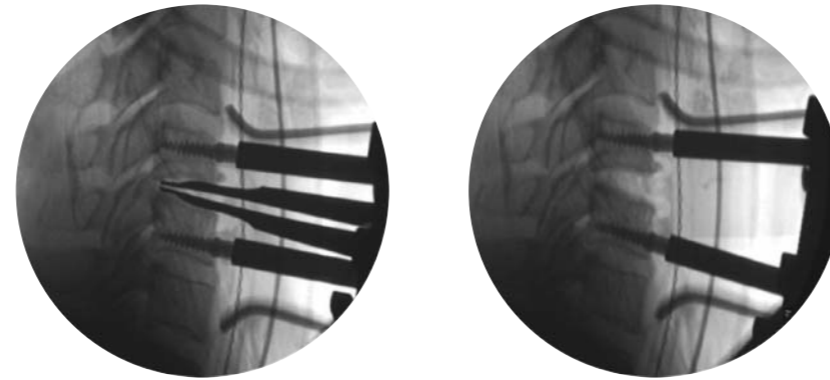
### 7. Confirm Final Placement

## 1. Insert Retainer Pins



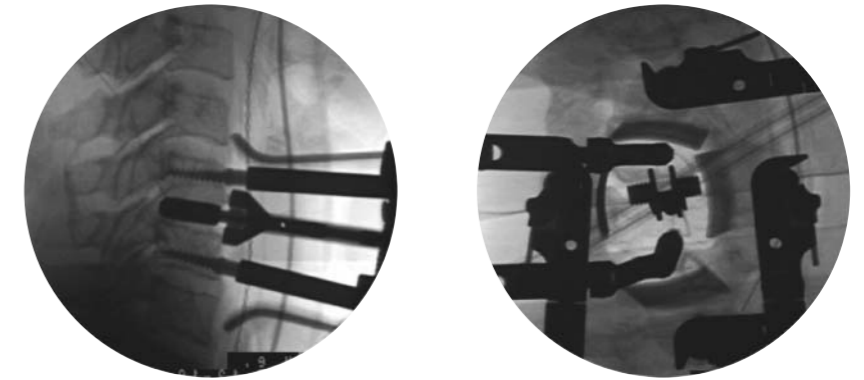
- Parallel to operative disc space; 1/3 zone
- Engage the posterior cortex

## 2. Distract – “Intradiscal”



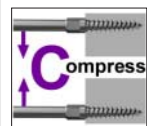
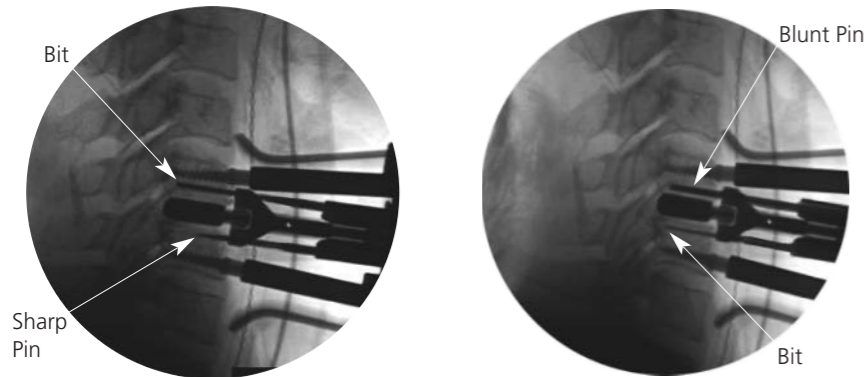
- Distract the vertebral body distractor
- Retain with vertebral body retainer

## 3. Trial



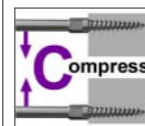
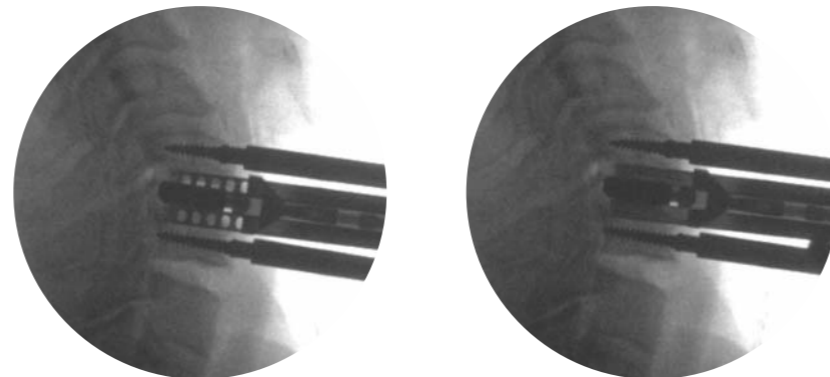
- Largest footprint, shortest height
- To the posterior margin, centered on midline

## 4a. Prepare Keel Channels: Milling



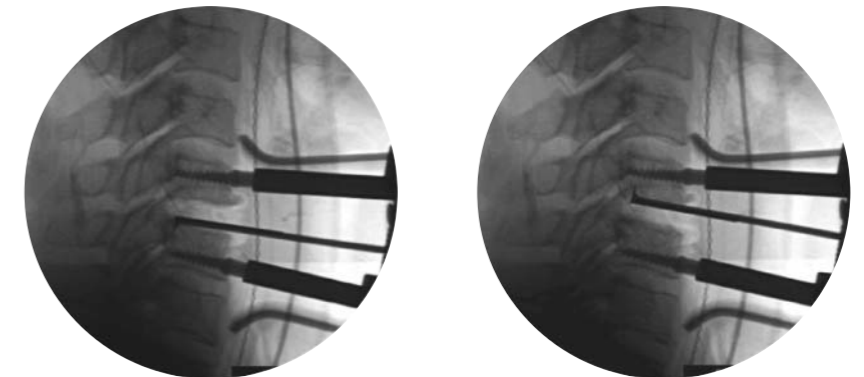
- Under full power, insert bit straight into vertebral body
- Sweep bit towards trial and then back
- Repeat milling in the other vertebral body

## 4b. Prepare Keel Channels: Chiseling



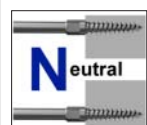
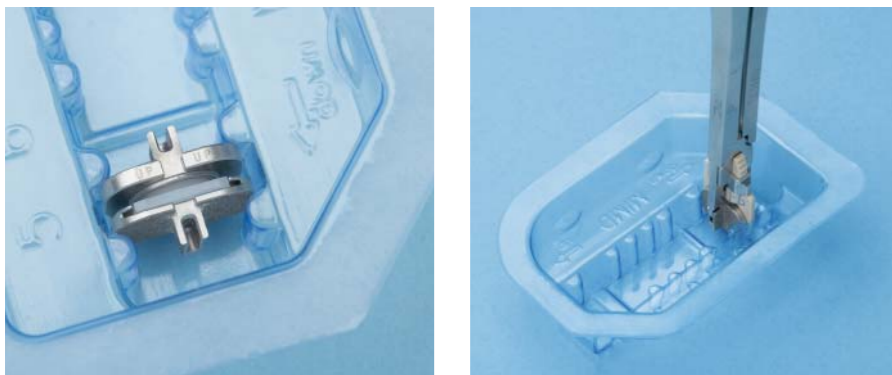
- Primary (fenestrated) chisel first
- Advance until fully seated on trial
- Repeat with secondary (box) chisel

## 5. Verify Keel Channels

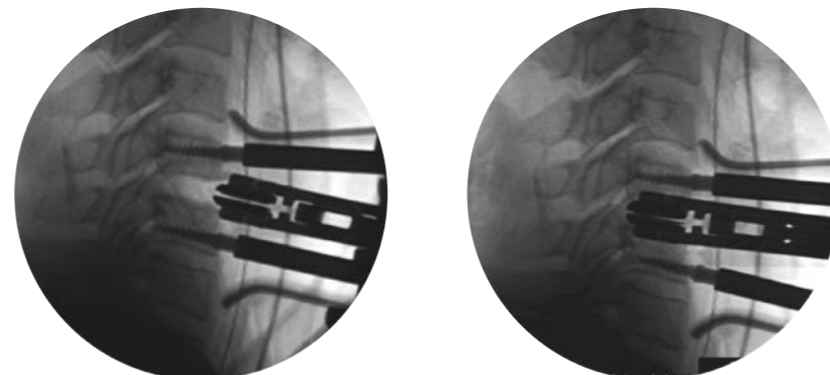


- Clean keel channels
- Verify depth and height of keel channels are equal

## 6. Implant



- Load implant from package
- Confirm UP on inserter matches UP on implant
- Confirm poly inlay is inferior



- Confirm UP on inserter is cranial, poly insert is inferior
- Align implant keels with keel channels
- Confirm trajectory; advance to end of keel cuts

## 7. Confirm Final Placement

